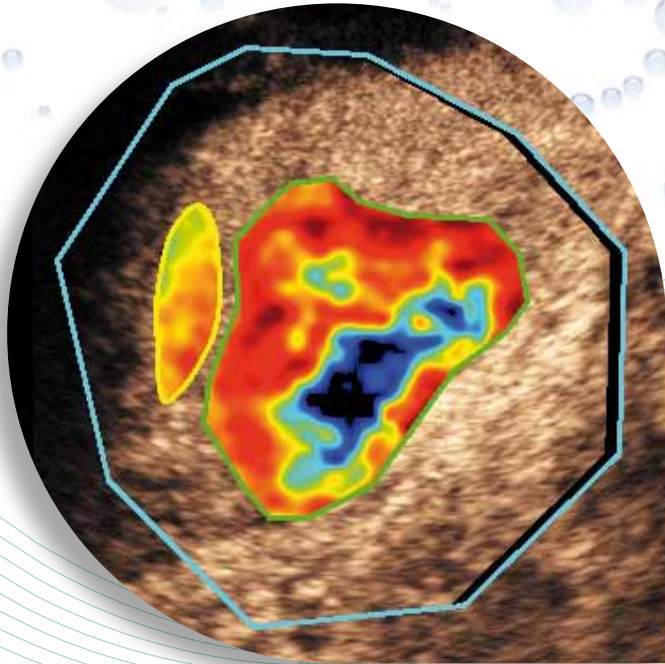


Bracco. The contrast imaging specialists.

Dynamic Contrast Enhanced Ultrasound

Quantification Toolbox

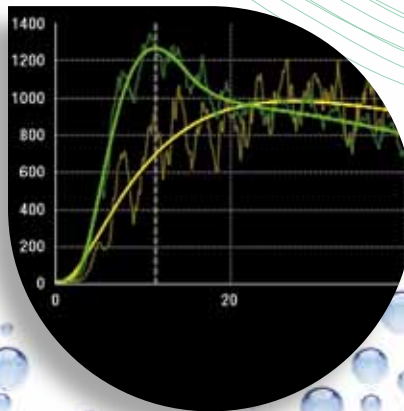


From Qualitative
to Quantitative

Analysis of linear data

Cross-platform
compatibility

VueBOX™



Committed to Science,
Committed to You.™

CE 1253



LIFE FROM INSIDE



VueBOX™



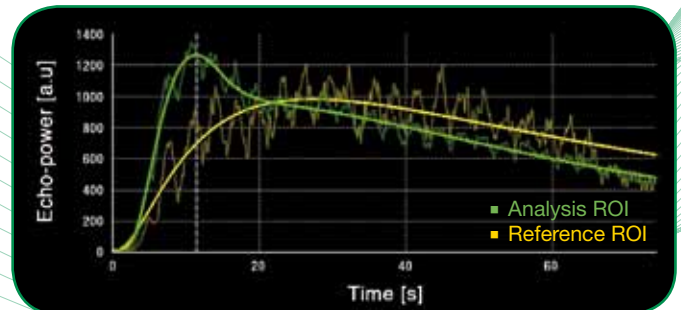
VueBox™ is intended for Clinicians and Researchers interested in:

- DCE-US perfusion quantification in any type of tissue
- Obtaining reliable perfusion parameter values
- Processing data acquired with different ultrasound platforms
- Documenting analyses in a synthetic report
- Retrieving and comparing examinations performed at different dates
- Documenting their work for publication purposes

VueBox™ is a general-purpose software application for quantifying tissue perfusion using Dynamic Contrast-Enhanced Ultrasound (DCE-US).

VueBox™ is a quantification toolbox designed to analyze DCE-US DICOM clips obtained with a wide range of ultrasound systems*.

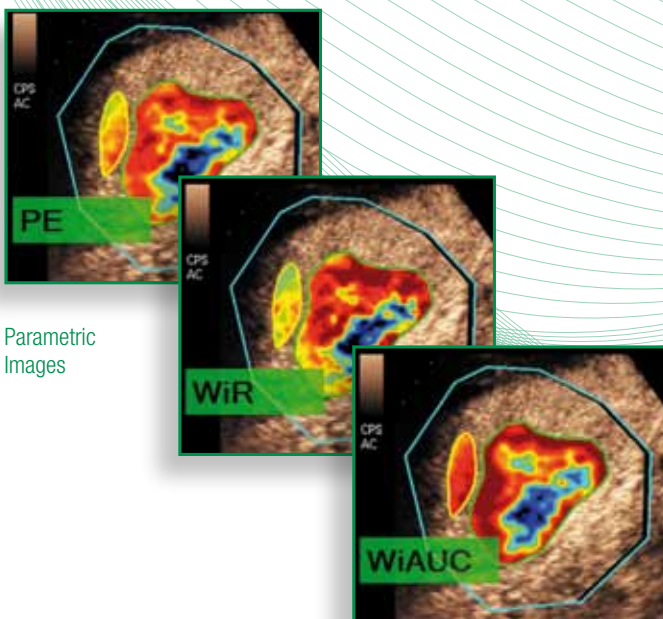
Its unique Bracco-patented technology and linearization process allow quantitative assessment of perfusion.



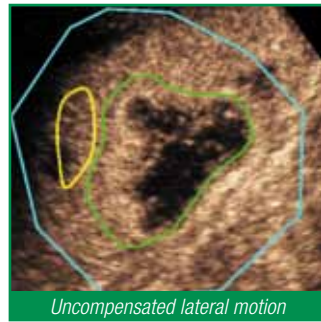
Optimized curve fitting on linear data

Key features:

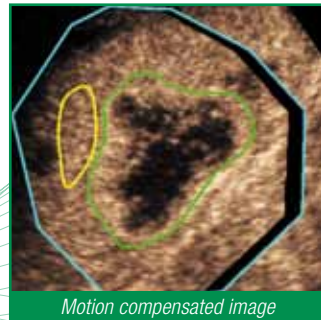
- Solution to analyze DICOM clips from different ultrasound systems*
- Linearization of video data for accurate measurements
- Optimized curve fitting based on Bracco-patented technology
- Compatible with bolus and replenishment kinetics
- Multiple parametric images
- Short processing time thanks to parallel programming optimized for multi-core processors



Parametric Images



Time



Additional features:

- Fully automatic motion compensation
- Easy-to-use clip editor
- Multiple window interface using tabs
- Concatenation of multiple clips
- Automatic detection of contrast arrival
- Saving and retrieving of user-drawn Regions of Interest
- Automatic management of side-by-side display (contrast and B-mode)
- Length and area measurements
- Real time clip player
- Clip anonymization

Management of analysis results:

- Saving and retrieving of analysis results and context
- Export of graphs and images (BMP, TIF, JPEG), data (Excel compatible) and clips (WMV)
- Generator of customizable and easy-to-read analysis report

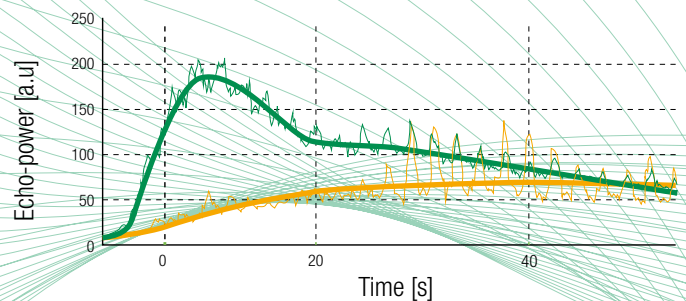
Bolus model parameters

Fit	Perfusion model
Lin	Linearized signal
PE	Peak Enhancement
WiAUC	Area Under the Curve (Wash-in)
RT	Rise Time
mTTI	mean Transit Time (local)
TTP	Time To Peak
WiR	Wash-in Rate
WiPI	Wash-in Perfusion Index (WiAUC/RT)
WoAUC	Wash-out AUC
WiWoAUC	Wash-in and Wash-out AUC
FT	Fall Time
WoR	Wash-out Rate
QOF	Quality Of Fit
Area	ROI area

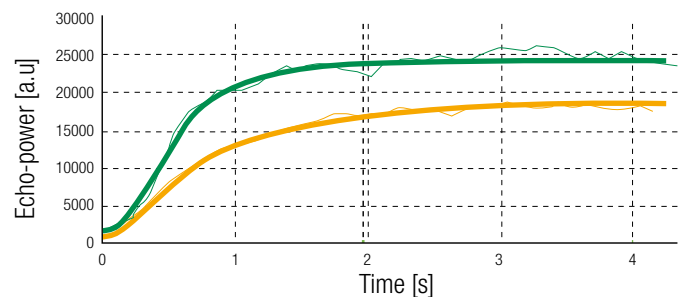
Replenishment model parameters

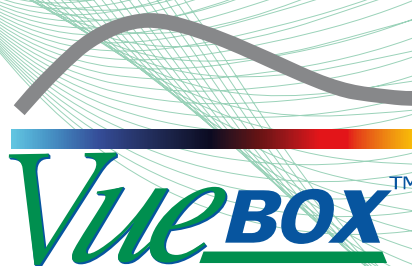
Fit	Perfusion model
Lin	Linearized signal
rBV	relative Blood Volume
mTT	mean Transit Time
PI	Perfusion Index (rBV/mTT)
WiR	Wash-in Rate
QOF	Quality Of Fit
Area	ROI area

Wash-in Rate				
Ref	Label	[a.u]	Ref [%]	Ref [dB]
	Analysis	35.31	961.82	9.83
✓	Reference	3.67	100.00	0.00



relative Blood Volume				
Ref	Label	[a.u]	Ref [%]	Ref [dB]
	Analysis	21968.40	128.81	1.10
✓	Reference	17054.89	100.00	0.00





PW7688 Printed in November 2011



Bracco Suisse SA -
Software Applications



2011/06



1253

**Bracco Suisse SA -
Software Applications**
31, route de la Galaise
1228 Plan-Les-Ouates
Genève - Suisse
fax +41-22-884-8885



LIFE FROM INSIDE

To get a free trial version, visit: <http://vuebox.bracco.com>
To get the list of Bracco distributors, visit: www.braccoimaging.com